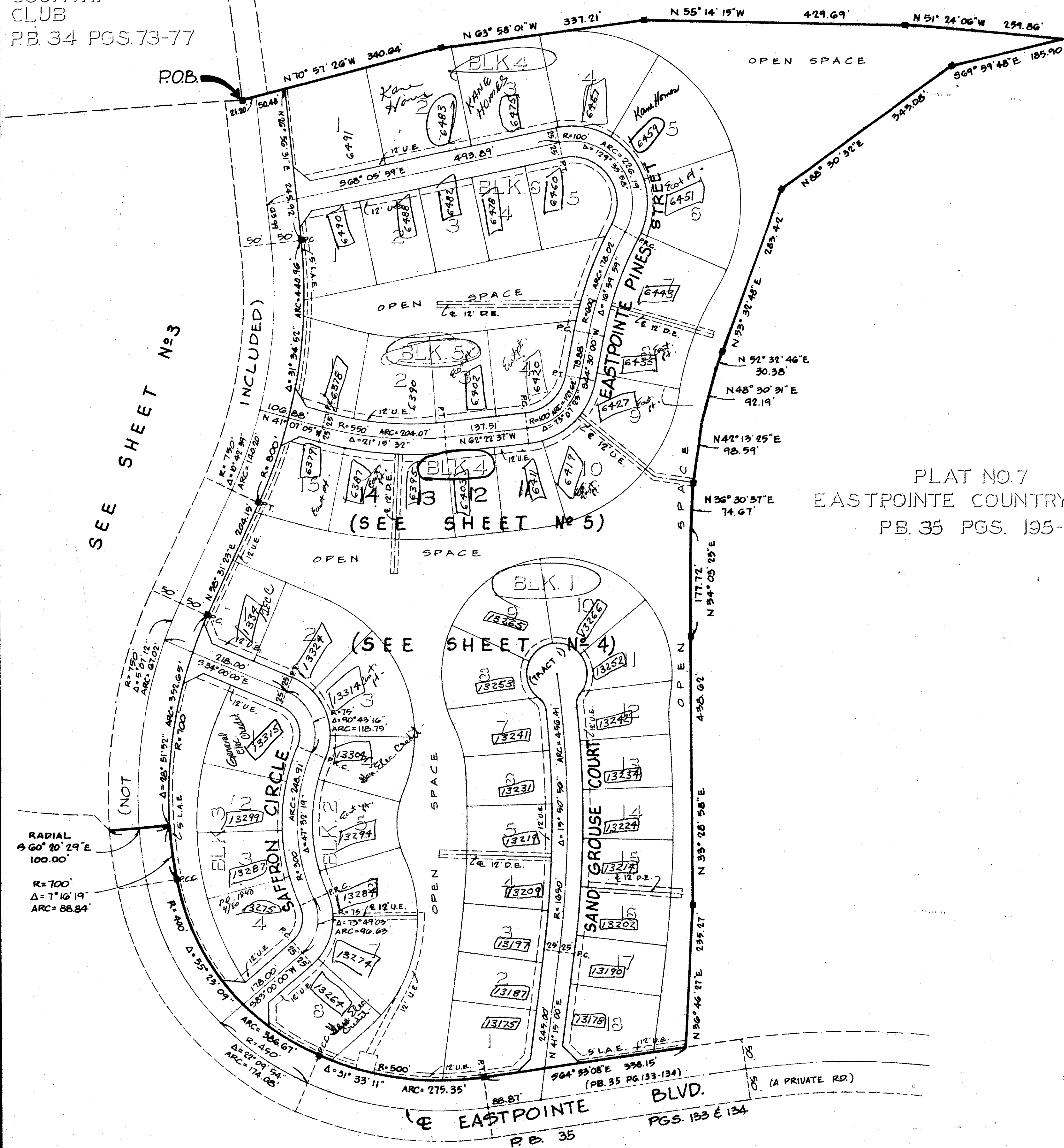


PLAT NO.4
EASTPOINTE
COUNTRY
CLUB
P.B. 34 PGS.73-77

PLAT NO.5
EASTPOINTE COUNTRY CLUB
P.B. 34 PGS.128-130

PLAT NO.7
EASTPOINTE COUNTRY CLUB
P.B. 35 PGS. 195-200



12

STATE OF FLORIDA
COUNTY OF PALM BEACH
This Plat was filed for record at
this _____ day of _____, 1978,
and duly recorded in Plat Book No. _____
on page _____
JOHN B. DUNKLE, Clerk Circuit Court
By _____ D.C.

PLAT NO. 8 EASTPOINTE COUNTRY CLUB

(A PLANNED UNIT DEVELOPMENT)
IN SECTION 27, TOWNSHIP 41 SOUTH, RANGE 42 EAST
PALM BEACH COUNTY, FLORIDA

IN 8 SHEETS SHEET NO. 2

NOTES:

THERE SHALL BE NO BUILDINGS OR STRUCTURES PLACED ON UTILITY EASEMENTS.

THERE SHALL NOT BE ANY TYPE OF CONSTRUCTION OR THE PLANTING OF TREES OR SHRUBS ON DRAINAGE EASEMENTS.

BEARING REFERENCE: PLAT NO. 4 EASTPOINTE COUNTRY CLUB, PLAT BOOK 34, PAGES 73 - 77

IMPROVEMENTS WITHIN THIS PLAT ARE SUBJECT TO THE DECLARATION OF RESTRICTIVE COVENANTS AS FILED IN O.R.B. 2543, PAGE 1230, OFFICIAL RECORDS OF PALM BEACH COUNTY.

BUILDING SETBACKS SHALL BE AS REQUIRED BY PALM BEACH COUNTY ZONING REGULATIONS.

AREA OF LOTS BLOCK 1	= 5.537 ACRES
AREA OF LOTS BLOCK 2	= 2.976
AREA OF LOTS BLOCK 3	= 1.377
AREA OF LOTS BLOCK 4	= 6.123
AREA OF LOTS BLOCK 5	= 1.422
AREA OF LOTS BLOCK 6	= 1.649
AREA OF LOTS BLOCK 7	= 1.820
AREA OF LOTS BLOCK 8	= 1.788
AREA OF LOTS BLOCK 9	= 0.928
AREA OF LOTS BLOCK 10	= 2.329
AREA OF LOTS BLOCK 11	= 2.620
AREA OF LOTS BLOCK 12	= 5.106
AREA OF LOTS BLOCK 13	= 2.176
AREA OF LOTS BLOCK 14	= 1.901
AREA OF LOTS BLOCK 15	= 3.218
AREA OF PRIVATE ROADS	= 10.890
AREA OF RECREATION AREA	= 5.824
AREA OF DRAINAGE EASEMENTS	= 2.474
AREA OF OPEN SPACES	= 11.495

TOTAL AREA 71.663 ACRES

TOTAL DWELLING UNITS (SINGLE FAMILY) = 122

DENSITY = 1.70 UNITS PER ACRE

■ = PERMANENT REFERENCE MONUMENTS (P.R.M.) NO. 1552

○ = PERMANENT CONTROL POINT (P.C.P.)

⊖ = BICYCLE-PEDESTRIAN PATH

D.E. = DRAINAGE EASEMENT

L.A.E. = LIMITED ACCESS EASEMENT

U.E. = UTILITY EASEMENT

27

27/41/36
142
12

NOT PLATTED

EASTPOINTE COUNTRY CLUB

0238-315